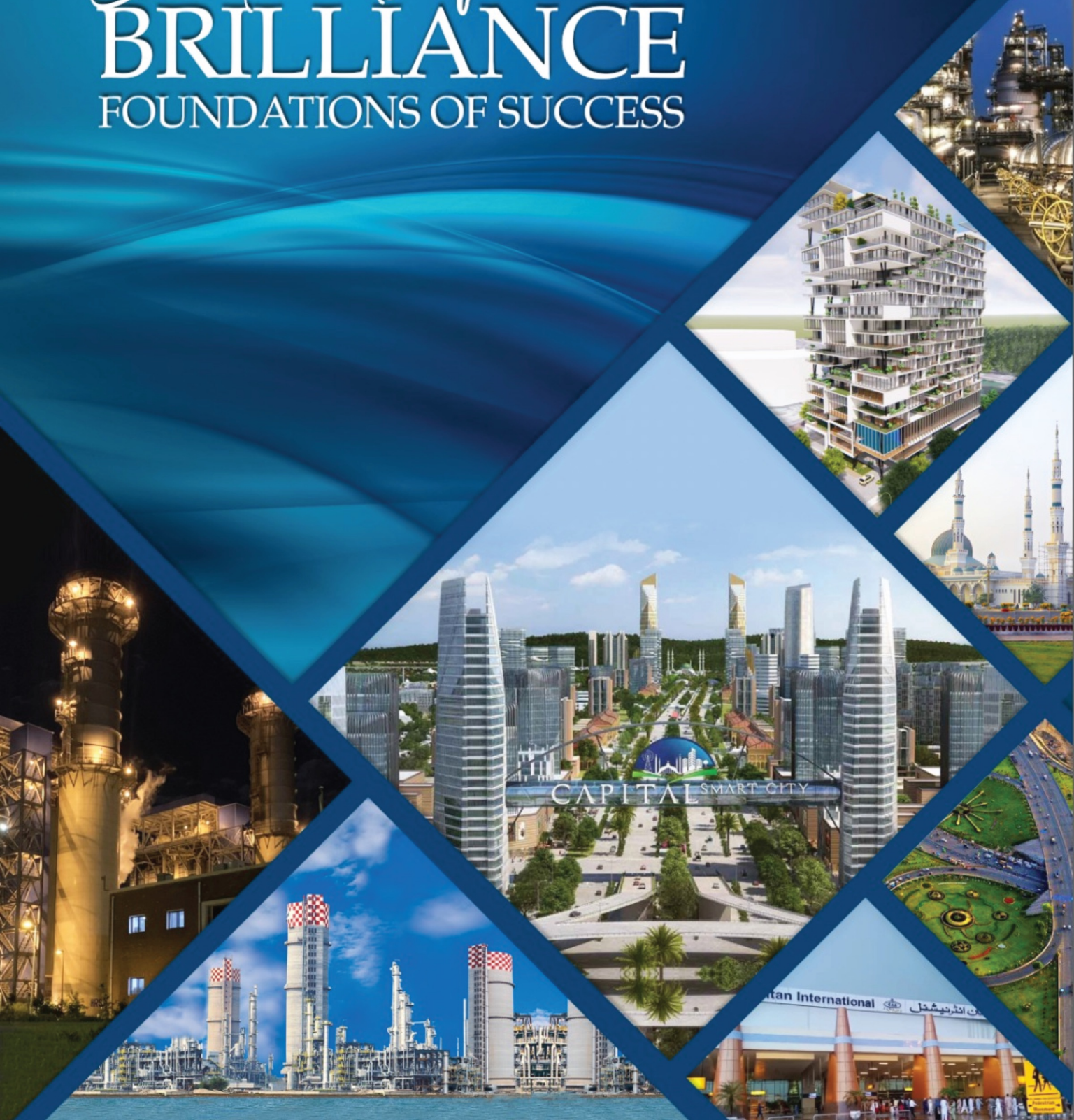


**HABIB RAFIQ
ENGINEERING (PVT.) LIMITED**

Blueprints of
BRILLIANCE
FOUNDATIONS OF SUCCESS



STENZON

- 01 INTRODUCTION
- 02 CHAIRMAN'S MESSAGE
- 03 GROUP COMPANIES
- 04 DOMAIN STRUCTURE
- 05 AREAS OF CERTIFICATION
- 06 POWER & ENERGY PROJECTS
- 07 CHEMICALS & PETROCHEMICALS PROJECTS
- 08 INDUSTRIAL PROJECTS
- 09 ENGINEERING & CONSTRUCTION PROJECTS
- 10 EXPANSION OF HRL (PVT.) LIMITED
- 11 MACHINERY & HUMAN RESOURCE
- 12 COMPANY'S CLIENTELE



ABOUT HRL

HABIB RAFIQ
ENGINEERING (PVT.) LIMITED

“

TRANSFORMING VISIONS INTO REALITY

For more than Seven Decades, Habib Rafiq Engineering (Pvt) Ltd. has exemplified dedication, delivering customer dreams across Pakistan and the globe. Our legacy is etched with commitment, where precision meets passion. Habib Rafiq Engineering (Pvt) Ltd. has pioneered Pakistan's landscape with iconic projects, fortified by ISO 9000-certified quality management. Synonymous with quality, we're a name that echoes trust.

The last 15 years ushered Habib Rafiq Engineering (Pvt) Ltd. as a housing and infrastructure visionary. We redefine norms, embracing real estate's giants. Housing schemes, roads, electrification, mechanics. We craft holistic marvels, the blueprints of progress.

Beyond this, Habib Rafiq Engineering (Pvt) Ltd. pioneers innovation from green energy to mining, special economic zones to education, health care to global projects - we architect transformation, shaping tomorrows.

Globally, our footprints echo success. Engineering brilliance, resources, and expertise enrich high-impact ventures, igniting growth.

At our core, we're architects of dreams. Habib Rafiq Engineering (Pvt) Ltd.'s narrative is more than construction; it's communities empowered, cities transformed, and futures inspired. We're built on values, united by vision.

Our pledge is to architect greatness, construct legacies, and cultivate possibilities. HRL is a beacon of innovation, integrity, and ingenuity.

Habib Rafiq Group: Crafting Progress, Engineering Dreams, Building Futures.

CHAIRMAN'S MESSAGE



“

Habib Rafiq Engineering (Pvt) Ltd. once a dream has shaped into an absolute reality. This has taken an enduring of over Seven Decades of conviction and untiring efforts to see it grow into a group with one of the biggest market clients within and abroad. The company has seen the transformation from conventional to state-of-the-art and highly demanding mechanised construction.

It is an era of scientific achievements where hearts and minds are controlled by machines. Yet, we stand tall to maintain our composure through dedicated services to our clients and winning their love and satisfaction. Needless to say, it makes us feel very relaxed and proud.

Habib Rafiq Engineering (Pvt) Ltd. has always been at the forefront of taking up jobs and assignments with a cause and service to humanity integrated with innovation and a global outlook. Today we are humbled by our achievements in Industrial, Power, Oil & Gas, Infrastructure, High Buildings, Environmental, Irrigation and Aviation Fields. The hallmark of these efforts is the completion of all the projects ahead of agreed time frames.

I have always been a strong believer in faith and expect our next generation and the generations after to strive positively in the direction of modernization and expansion with the primary focus on hard work.

As we navigate new horizons, our commitment to diversification empowers Habib Rafiq Engineering (Pvt) Ltd. to thrive across multifarious sectors, forging a resilient and dynamic future.

Habib Rafiq Engineering (Pvt) Ltd. looks forward to betterment, helpfulness, and progress with a tool of exploring nature and the hidden engineering treasures in it, to make it a better world.

ZAHID RAFIQ (Chairman)

HRL GROUP COMPANIES

HABIB RAFIQ ENGINEERING LIMITED

HRL is one of the Largest Engineering & Construction Companies, offering high quality and cost-effective Engineering, Procurement, Construction and Project Management services in all engineering disciplines and have been in this business for over 70 years. HRL is the pioneer construction company of Pakistan to achieve ISO 9001:2000 since April 1999 and maintained it in the following areas "A project Management Company providing Engineering, Procurement, Civil Construction, Mechanical Fabrication & Erection and E&I Installation Services.

This also includes Plant Commissioning, Maintenance, Operation and Turnarounds." We have executed multi-disciplinary Mega Engineering Projects both in Pakistan and abroad. Significant projects completed to date are listed below for your kind information which also reflect the potential, capability and competence of the company.

ENGINEERING DIMENSIONS LIMITED

EDL over the past few years has been the direct result of sheer dedication and commitment to fulfilling customer requirements. Engineering Dimensions (Pvt) Limited has been involved in some of the most prestigious construction & engineering projects of Pakistan and its quality management process has already earned it an ISO 9000 certification. The name EDL is synonymous with quality and professionalism.

EDL enjoys the reputation of being a trend setter in the ever expanding arena of housing and infrastructure in the last many years and has earned a respect and reputation of being most recognized name in the market. The biggest name in real estate development are proud to have EDL associated with them, EDL has added value through a useful engineering contribution towards the concept of development of housing and infrastructure vis-a-vis other disciplines. We have done many projects as Housing Scheme developer company Pakistan with complete work including construction of houses, road infrastructure construction, electrical work, mechanical work, water tanks, gas pipelines and also provided town planning services to real estate development projects in Pakistan.

EDL having thrown its weight abroad has been successful in maintaining the balance and secure jobs of high engineering and financial value. Today we stand tall and firm over the strong foundation of reputation and trust with a high value and numbers of human and electromechanical resources which gives us a distinctive edge over the competitors in the market.

Mega Engineering Projects both in Pakistan and abroad. Significant projects completed to date are listed below for your kind information which also reflect the potential, capability and competence of the company.



HRL

GROUP COMPANIES

CAPITAL SMART CITY

In view of growing housing demand in the twin cities, FDHL intends to build a quality housing project on M2 Motorway near New Islamabad International Airport falling on the eastern route of CPEC. Capital Smart City aims to become first ever smart city in Pakistan and a model for sustainable development.

LAHORE SMART CITY

Lahore Smart City takes you on a voyage to experience the gigantic wonders of nature and man. The splendour of architecture, the grandeur of metropolitan living, smart lifestyle, modern construction, state-of-the-art town-planning, design and civil engineering are our building blocks. LSC is going to be the second smart city of Pakistan.

ROYAL ORCHARD

Royal Developers & Builders (Pvt) Limited is specialized in constructing world-class housing facilities and gated communities. This new phenomenon of excellence has started from relatively low-key markets, before storming the mainstream Real Estate regions.



HRL GROUP COMPANIES

DANDOT CEMENT COMPANY LIMITED

Dandot Cement Company Limited is a 3000 TPD cement plant established in Jhelum, Punjab, Pakistan. The plant has been taken over by HRL and BMR of plant is being undertaken along with solar plant establishment

GLOBAL CEMENT LIMITED

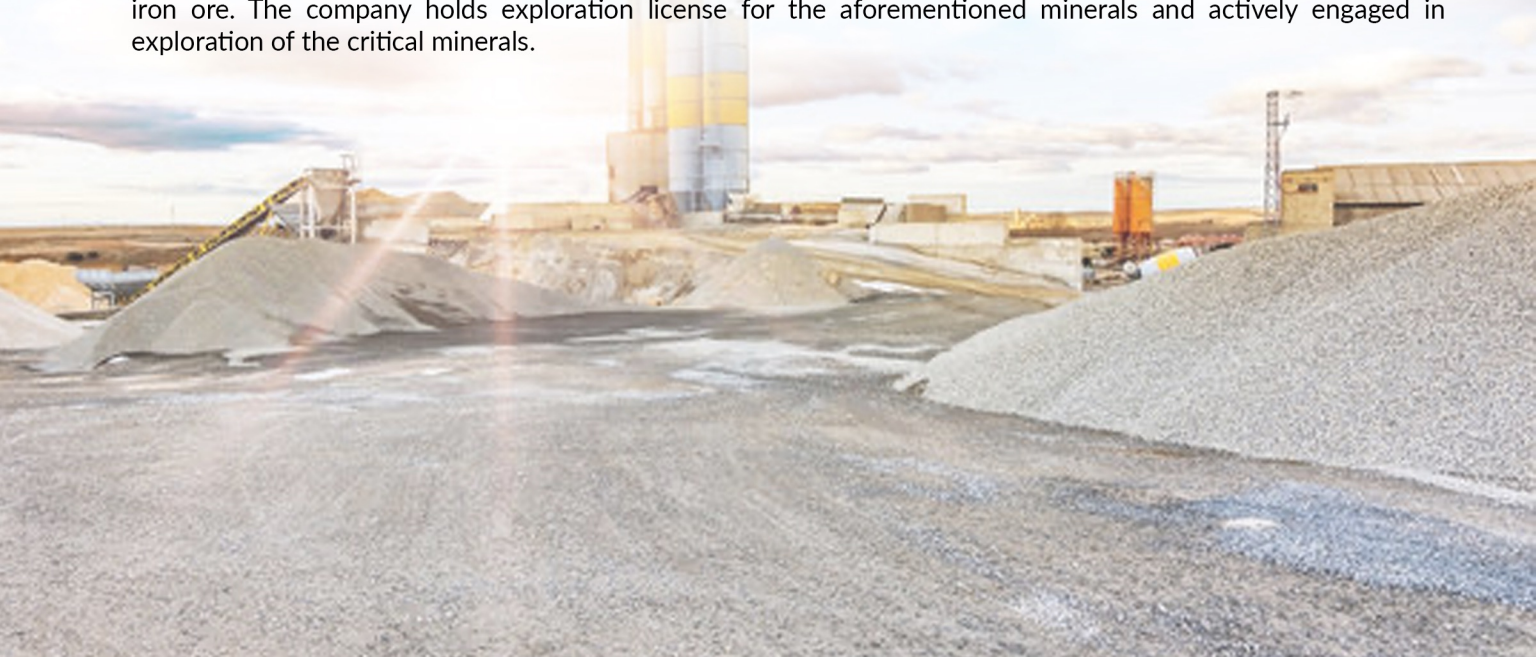
Global Cement Limited was incorporated in 2016 under the Companies Ordinance 1984 with the aim to establish cement plant in Pakistan. The company applied for grant of license for establishment of cement plant and was able to attain the license in 2020 being the first company to get the license for cement plant in Punjab, Pakistan after 13 years.

ANFAL CEMENT LIMITED

Anfal Cement Limited is a greenfield cement plant under process having 6000 TPD capacity. This plant is being established in Khushab, Punjab, Pakistan. The company holds exploration license of Pink Himalayan Rock Salt in Jhelum, Pakistan.

CAPITAL MINING LIMITED

CML is undertaking exploration and mining in Balochistan, Pakistan for Lithium, copper, gold, zinc, lead, barite and iron ore. The company holds exploration license for the aforementioned minerals and actively engaged in exploration of the critical minerals.



HRL

GROUP COMPANIES

SMART SEZ

Smart Special Economic Zone (SSEZ) is being developed on 74 acres of land in Shiekhupura, Punjab. SSEZ has certain locational advantages including easy access to M2 Motorway enabling raw material import and finished goods export without incurring major inland transportation costs and saving time.

CAPITAL STZ

Capital Special Technology Zone, known as CSTZ, will operate under the auspices of the Special Technology Zones Authority (STZA), which provides legislative and institutional support for the development of Pakistan's technology sector, offering physical and digital infrastructure and a regulatory framework to help the country build a technology-driven future.

Encompassing a strategically located 300-acre site adjacent to the M2 Motorway, the planned development of CSTZ signifies a significant step forward for Pakistan's technological future. Designed to function as a cornerstone for fostering domestic tech talent and attracting foreign direct investment (FDI), CSTZ will cultivate a world-class ecosystem conducive to the establishment of global technology companies and the relocation of expatriate personnel.



HRL

GROUP COMPANIES

CAPITAL ORGANICS LIMITED

Established in 2023 with a mission to ensure food security and agriculture excellence, COL aim to position Pakistan as a leading agricultural producer using modern farming techniques, research and development, and sustainable water management practices. By breaking low production barriers with frontloaded hi-tech farm mechanization, our focus is creating a sustainable future for agriculture in Pakistan

CAPITAL POWER LIMITED

CPL is shareholder in Heavy Electrical Complex which has been setup in technical collaboration with manufacturers of international repute, to manufacture electrical equipment mainly used in 132KV and 66KV sub-stations and grid-stations of high voltage power supply systems.

The works is located in Hattar Industrial Estate in the Province of Khyber Pakhtunkhwa at a distance of 66KM from the country's capital, Islamabad. The total Factory and is about 33 Hectares where's the area presently covered by the Factory Building is about 25,500 square metres. Heavy Electrical complex (HEC) is the only manufacturing facility of its kind in Pakistan, which is in a position to make an effective contribution towards the implementation of the country's energy development programme.

HEC also specializes in the repair of Power Transformers in the range of 250MVA, 132/220/500KV and offers its clients, repair facilities, assistance in installation and commissioning of the equipment and diagnostic inspection

CAPITAL SMART MOTORS

Capital Smart Motors, a subsidiary of HRL Group, is in joint venture with global automotive leader **Geely** to bring **Pakistan's first commercial New Energy Vehicle (NEV) project** to life—covering both **Completely Knocked Down (CKD)** and **Completely Built-Up (CBU)** formats.

This pioneering initiative represents a major advancement in sustainable mobility, aligned with HRL's commitment to cleaner, greener solutions for the future. By introducing innovation in eco-friendly transportation, Capital Smart Motors plays a vital role in shaping the next generation of automotive development in Pakistan. As part of HRL's expanding industrial ecosystem, the company underscores the Group's long-term focus on technological excellence, environmental responsibility, and national progress.



HRL GROUP COMPANIES

MEP SOLUTION PVT. LTD

A specialized MEP (Mechanical, Electrical & Plumbing) contracting firm is a part of the Habib Rafiq Group network, MEP Solutions Pvt. Ltd. has been delivering integrated engineering services since 2009. With operations across Pakistan and a registered presence in the Kingdom of Saudi Arabia, the company is currently engaged in high-profile international assignments, including the prestigious Aramco Stadium project. Its portfolio spans HVAC, fire protection, BMS, informatics, and EPC solutions—executed with a focus on safety, efficiency, and international standards.

SMART HIGHER EDUCATION SERVICES LIMITED

HRL is establishing Smart Higher Education Services Limited which will provide state of the art engineering and science education to Pakistan.

SKY47

A Technology Initiative of Habib Rafiq Group

Sky47, part of HRL Group's diversified portfolio, represents the Group's forward-looking vision in the field of information technology and artificial intelligence.

The company is focused on developing and expanding Data Centers, Cloud Services, and AI infrastructure across Pakistan—laying the groundwork for a smarter, digitally empowered future. Positioned at the intersection of innovation and national development, Sky47 reflects HRL's ongoing commitment to driving digital transformation and strengthening Pakistan's IT capabilities.

CAPITAL SMART TECHNOLOGIES

Capital Smart Technologies Pvt Ltd is a leading provider of innovative IT solutions, specializing in the development and management of data processing centers, computer hubs, and software development facilities.

We offer a wide range of services including custom software and operating system development, IT consultancy, and comprehensive training in software, hardware, and electronic data processing.

Our operations also include the import and export of software and hardware, along with the development of infrastructure to support advanced technology solutions.





WELCOME TO **HRL**

SHAPING TOMORROW'S LANDSCAPES

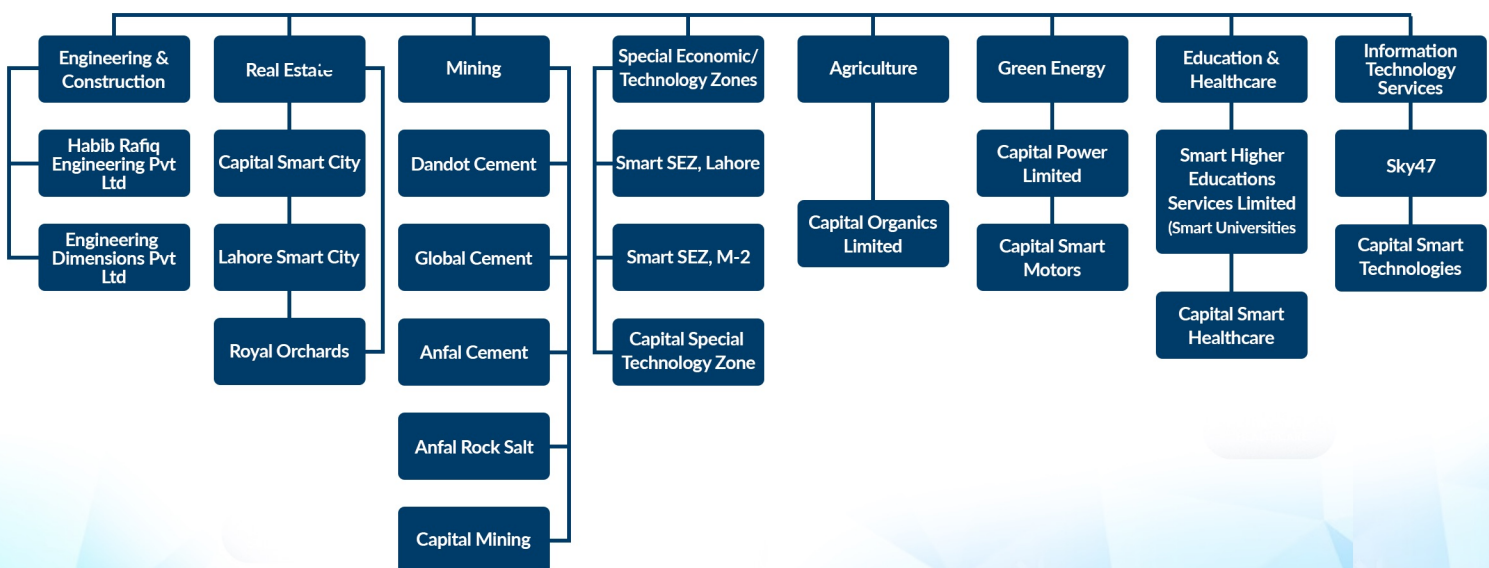
INNOVATIVE SOLUTIONS

SUSTAINABLE IMPACT

ENGINEERING EXCELLENCE



HABIB RAFIQ ENGINEERING PVT LTD.



AREAS OF CERTIFICATION



Habib Rafiq Engineering (Pvt) Ltd. was certified

as ISO 9001, 14001 by AIB-VINCOTTE, Belgium in April 1999 and OHSAS in the following areas:

A project management company providing engineering, procurement, civil construction, mechanical fabrication/erection and E & I installation services. This also includes plant commissioning, maintenance, operation, and turnaround.

HRL's approach to Quality, Health, Safety and the environment is fully supported by the entire organisational structure and true implementation/adherence at all levels. In other words, we have respect for our clients, employees, and Mother Nature.

POWER AND ENERGY





EXTENSION OF NUCLEAR POWER PLANT (K2/K3)

LOCATION: KARACHI, PAKISTAN

1180 MW RLNG-BASED COMBINED CYCLE POWER PLANT(EPC)

LOCATION: BHIKHI DISTT.
CLIENT: QUAID-E-AZAM THERMAL (PVT.) LTD.



1223 MW COMBINED CYCLE POWER PLANT

LOCATION: BALLOKI

2×660 MW COAL-FIRED POWER PLANT

LOCATION: SAHIWAL
CLIENT: SEPCO1 ELECTRIC POWER CONSTRUCTION
CORPORATION



2×660 MW COAL-FIRED POWER PLANT

LOCATION: BIN QASIM KARACHI



COAL-FIRED THERMAL POWER PLANT (1320 MW)

LOCATION: JAMSHORO, PAKISTAN

747 MW GUDDU POWER PLANT

LOCATION: KASHMORE GUDDU
CLIENT: WAPDA

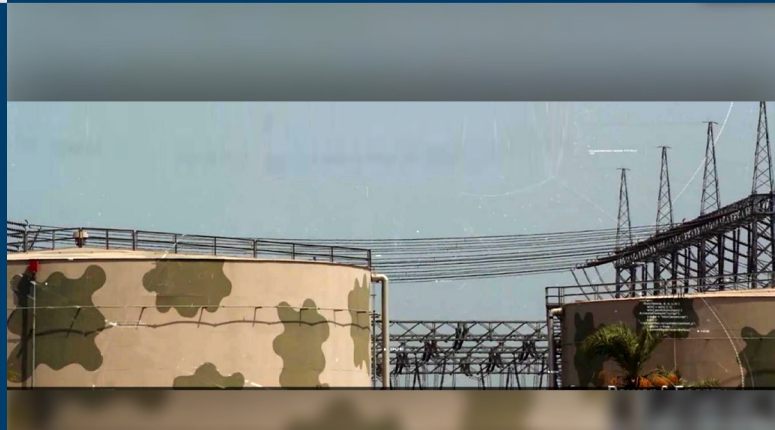


724 MW AES LALPIR

OIL FIRED POWER PLANT
LOCATION: MUZAFFARGARH

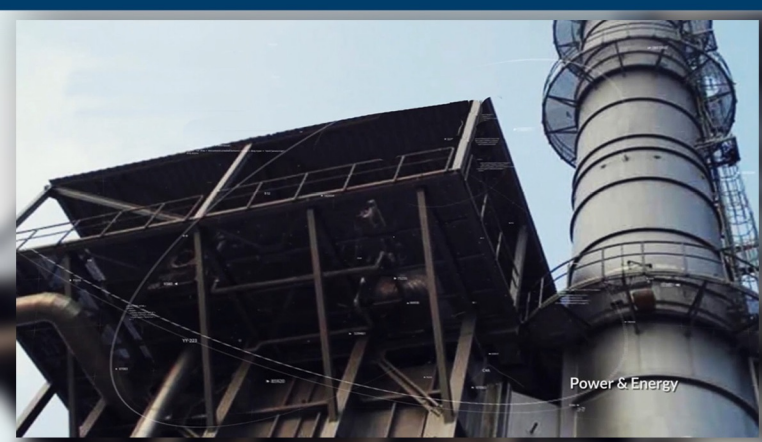
412 MW COMBINED CYCLE ROUSCH POWER PLANT

LOCATION: ABDUL-HAKEEM DISTRICT KHANEWAL
CLIENT: ROUSCH POWER LIMITED



400 MW POWER PLANT (UNIT 7,8,9)

LOCATION: KOT ADDU, MUZAFFARGARH
CLIENT: WAPDA





300 MW COMBINED CYCLE POWER PLANT

LOCATION: GUDDU JACOBABAD

22MW JABBAN HYDROELECTRIC POWER STATION

LOCATION: JABBAN (KPK)
CLIENT: WAPDA



14 MW NALTAR HYDRO

POWER PLANT NALTAR-V
LOCATION: GILGIT
CLIENT: GOVT OF GILGIT BALTISTAN

REINFORCEMENT OF 6 X 5 MW POWER PLANT

LOCATION: FARASAN, K.S.A
CLIENT: SEC-SOA-M/S. SAUDI SERVICE
ELECTRO MECHANIC WORK CO.



EXTENSION OF 25 MW KAMC POWER PLANT

LOCATION: TABUK, KINGDOM OF SAUDI ARABIA
CLIENT: MINISTRY OF DEFENCE & AVIATION



MEP PROJECTS

MECHANICAL WORKS

(HVAC, Fire Fighting and Process Equipment)

- Complete HVAC system Comprising ducting, piping, insulations and equipment installation for central chiller-based system, VRF & Packaged type, split air conditioning systems.
- Complete fire suppression systems, both water-based fire hose cabinets, sprinkler systems and (foam & gas-based FM-200) with complete piping, fittings, pumps and assemblies.
- Process equipment like boilers, compressors, gas system with complete allied piping and E&I (Electric & Instrumentations) works.



ELECTRICAL WORKS

(MV, LV, Distributions N/W)

- MV and LV systems, including switchgear, control panels transformers, DBs, circuit & point wiring, containment & trunking.
- Light fittings & wiring accessories.
- Central battery emergency lighting systems.
- Underground and Overhead electrification.



PUBLIC HEALTH

(Water Supply, Rainwater, Drainage)

- Complete water supply system for both hot & chilled water.
- Pumping stations and distribution, booster pumps, water calorifiers heaters, copper & PVC pipe systems.
- Rain & wastewater pipe & allied works.
- Sanitaryware and accessories works.



ELV & ICT SYSTEM & SERVICES

- Fire alarm system
- Public address system
- Accesses control system
- CCTV system
- IBAS (integrated building & automation system)
- Data networking system includes cabling
- GRMS (guest room management system)
- Car parking management system
- Switching of copper & optical fiber system
- Data center
- Queue management system

OUR MAJOR PROJECTS

INDUSTRIAL PROJECTS

- KIA Motors Plant Karachi
- Colgate Palmolive Plant Sindh
- DG Cement Plant Balochistan
- National Foods Plant Faisalabad
- Interloop Apparel Unit Faisalabad
- Ecolean Packaging Plant Lahore
- Lotte Kolson Plant Lahore
- Nippon Paint Factory Lahore



INFRASTRUCTURE PROJECTS

- Allama Iqbal International Airport Lahore
- The Lahore Safe City
- DHQ Hospital Bagh AJK
- Hameed Latif Hospital Lahore
- Greater Iqbal Park Lahore
- TNS Beaconhouse School Building Lahore
- NUST SSS Faculty Islamabad
- The Indus Hospital Lahore



COMMERCIAL & HIGH RISE PROJECTS

- Emporium Mall Lahore
- Packages Mall Lahore
- Dolmen Mall Karachi
- Askari Tower Lahore
- Nestle Head Office Building Lahore
- Coca Cola Head Office Building Lahore
- World Bank Country Office Islamabad
- Hyperstar Lahore



HOUSING PROJECTS

- Dream Gardens Lahore
- Dream Gardens Multan
- Dream Gardens Wazirabad
- Faisal Cottages Multan
- Mannan Town Faisalabad
- Satellite Town Muzaffarabad
- Lahore Cantonment Board



CHEMICALS AND **PETROCHEMICALS**





PARCO MID COUNTRY OIL REFINERY (100,000 BPD CAPACITY)

LOCATION: MUZAFFARGARH
CLIENT: PARCO - PAK ARAB REFINERY LTD

ATTOCK OIL REFINERY UP -GRADATION (30,000 BPD CAPACITY)

LOCATION: RAWALPINDI
CLIENT: ATTOCK REFINERY



DEWAN SALMAN FIBER ACRYLIC PLANT

LOCATION: HATTER, KPK
CLIENT: DEWAN MUSHTAQ GROUP

FJFC UREA DAP AMMONIA FERTILIZER COMPLEX

LOCATION: BIN QASIM, KARACHI
CLIENT: FAUJI FERTILIZER COMPANY (FFC)



DEDUSTING SYSTEM - QASSIM CEMENT CO.

LOCATION: QASSIM SAUDIA ARABIA
CLIENT: FLS AIRTECH - DENMARK

INDUSTRIAL PLANT PROJECTS



COCA COLA BEVERAGES PAKISTAN GREEN FIELD PROJECT

LOCATION: FAISALABAD
CLIENT: COCA COLA PAKISTAN LTD.



COCA COLA BEVERAGES PAKISTAN GREEN FIELD PROJECT

LOCATION: HARIPUR (H.A.T.T.A.R)
CLIENT: COCA COLA PAKISTAN LTD.



COCA COLA BEVERAGES PAKISTAN LTD

LOCATION: MULTAN
CLIENT: COCA COLA PAKISTAN LTD.



NESTLE EGRON-2 PROJECT

LOCATION: SHEIKHUPURA ROAD, AHORE
CLIENT: NESTLE PAKISTAN LIMITED



TETRA PACK LAHORE -2 PROJECT

LOCATION: SUNDAR INDUSTRIAL ESTATE, LAHORE
CLIENT: TETRA PACK PAKISTAN (PVT.) LIMITED



ENGINEERING **AND** CONSTRUCTION PROJECTS

RESHAPING REALITIES
**ARCHITECTURAL
MARVELS**

BY **HRL**
HABIB RAFIQ
ENGINEERING (PVT.) LIMITED



ELEVATING URBAN LIVING

CRAFTING
COMMERCIAL EXCELLENCE



CONVENTION CENTRE ISLAMABAD

LOCATION: ISLAMABAD, PAKISTAN
CLIENT: CAPITAL DEVELOPMENT AUTHORITY

101 TOWER

LOCATION: LAHORE
CLIENT: SKY RESIDENCIA



GRAND JAMIA MOSQUE

LOCATION: BAHRIA TOWN, LAHORE
CLIENT: BAHRIA TOWN (PVT.) LIMITED

BAHRIA ICON TOWER

LOCATION: CLIFTON, KARACHI
CLIENT: GALAXY CONSTRUCTION (PVT.) LTD.



BAHRIA HEIGHTS

LOCATION: KARACHI, PAKISTAN
CLIENT: BAHRIA TOWN, (PVT.) LIMITED

BAHRIA TOWN, LAHORE

LOCATION: LAHORE, PAKISTAN
CLIENT: BAHRIA TOWN (PVT.) LIMITED



BAHRIA TOWN, PHASE VII

LOCATION: RAWALPINDI, PAKISTAN
CLIENT: BAHRIA TOWN, (PVT.) LIMITED

KOHAT TUNNEL ROAD

LOCATION: KOHAT, PAKISTAN
CLIENT: NATIONAL HIGHWAY AUTHORITY



CREEK VISTA, CREEK CITY

LOCATION: DHA PHASE VIII, KARACHI, PAKISTAN
CLIENT: DEFENCE HOUSING AUTHORITY, KARACHI

DHA PHASE II, ISLAMABAD

LOCATION: ISLAMABAD, PAKISTAN
CLIENT: W&R DIRECTORATE, PAKISTAN ARMY





DHA PHASE I, EXTENSION, ISLAMABAD

LOCATION: ISLAMABAD, PAKISTAN
CLIENT: DHA ISLAMABAD

DHA PHASE II, EXTENSION, ISLAMABAD

LOCATION: ISLAMABAD, PAKISTAN
CLIENT: W&R DIRECTORATE, PAKISTAN ARMY



CABINET DIVISION EMPLOYEES CORPORATE HOUSING SCHEME

LOCATION: ISLAMABAD, PAKISTAN
CLIENT: CABINET DIVISION, GOVT OF PAKISTAN.



TRICON VILLAGE

LOCATION: LAHORE, PAKISTAN
CLIENT: TRICON (PVT.) LIMITED



LAKE CITY (BELLA VISTA)

LOCATION: RAIWIND ROAD, LAHORE
CLIENT: LAKE CITY HOLDINGS (PVT.) LIMITED



LAHORE-SHEIKHUPURA FAISALABAD DUAL CARRIAGEWAY (120 KM)

LOCATION: KHURRIANWALA, FAISALABAD
CLIENT: LAFCO



MOTORWAY (ISLAMABAD TO PESHAWAR)

LOCATION: ISLAMABAD TO PESHAWAR
CLIENT: NATIONAL HIGHWAY AUTHORITY



LAHORE RING ROAD (PACKAGE III)

LOCATION: LAHORE, PAKISTAN
CLIENT: PUNJAB HIGHWAY AUTHORITY



MULTAN METRO BUS PROJECT

LOCATION: MULTAN, PAKISTAN
CLIENT: MULTAN DEVELOPMENT AUTHORITY



TRICON CORPORATE CENTRE

LOCATION: LAHORE, PAKISTAN
CLIENT: TRICON (PVT) LTD.



PAKISTAN INSTITUTE FOR PARLIAMENTARY SERVICES

LOCATION: ISLAMABAD, PAKISTAN
CLIENT: US-AID, PAKISTAN



FOUNDATION MEDICAL COLLEGE

LOCATION: ISLAMABAD, PAKISTAN
CLIENT: FAUJI FOUNDATION



SHAHEEN COMPLEX

LOCATION: LAHORE, PAKISTAN
CLIENT: SHAHEEN FOUNDATION ISLAMABAD



DAMMAM ARAMCO STADIUM

SCOPE OF WORK: MEP WORKS
LOCATION: SPORTS CITY ALKHOBAR,
DAMMAM KINGDOM OF SAUDI ARABIA





MIDDLE AND LOW-COST HOUSING SCHEME

LOCATION: SAMURA, MALAYSIA
CLIENT: SAMURAI, MALAYSIA SDN, BHD

300 BEDS SAUDI GERMAN HOSPITAL

LOCATION: DUBAI, U.A.E
CLIENT: SAUDI GERMAN HOSPITAL GROUP



400 BEDS SAUDI GERMAN HOSPITAL

LOCATION: ABHA, KINGDOM OF SAUDI ARABIA
CLIENT: SAUDI GERMAN HOSPITAL GROUP



300 BEDS SAUDI GERMAN HOSPITAL

LOCATION: MADINA, KINGDOM OF SAUDI ARABIA
CLIENT: SAUDI GERMAN HOSPITAL GROUP



300 BEDS SAUDI GERMAN HOSPITAL

LOCATION: AL-RIYADH,
KINGDOM OF SAUDI ARABIA
CLIENT: SAUDI GERMAN HOSPITAL GROUP



SAUDI GERMAN HOSPITAL MEDICAL COLLEGE

LOCATION: JEDDAH, KINGDOM OF SAUDI ARABIA
CLIENT: SAUDI GERMAN HOSPITAL GROUP





| ENVIRONMENTAL |



COMMON EFFLUENT PRE-TREATMENT PLANT FOR TANNERIES, KASUR

LOCATION: KASUR, PAKISTAN
CLIENT: KASUR TANNERY
WASTE MANAGEMENT AGENCY

HUB WATER TREATMENT PLANT (C4), KARACHI)

LOCATION: KARACHI, PAKISTAN
CLIENT: KARACHI WATER SUPPLY BOARD



SEWAGE TREATMENT PLANTS (PHASE I, II, III & IV) 17 MGD CAPACITY

LOCATION: SECTOR I-9, ISLAMABAD
CLIENT: CAPITAL DEVELOPMENT AUTHORITY



AIRPORTS & AVIATION



MULTAN INTERNATIONAL AIRPORT

LOCATION: MULTAN, PAKISTAN
CLIENT: CIVIL AVIATION AUTHORITY



WATER RESOURCES & ENGINEERING

WATER SUPPLY TO ISLAMABAD FROM KHANPUR DAM

LOCATION: KHANPUR, PAKISTAN
CLIENT: CAPITAL DEVELOPMENT AUTHORITY





REAL ESTATE

Habib Rafiq Engineering (Pvt) Ltd. has successfully expanded the business. Leveraging advanced construction and technology, we diversified our offerings beyond construction to encompass urban planning, smart infrastructure development, and sustainable solutions. This expansion aligns with the vision of creating modern, efficient, and connected urban environments while catering to the growing demands of these innovative residential and commercial projects like;

CAPITAL SMART CITY

LAHORE SMART CITY

ROYAL ORCHARDS



MINING

Habib Rafiq Engineering (Pvt) Ltd. strategically broadened its scope. It transitioned to encompass diverse aspects of the industry, including production optimization, global distribution networks, product diversification, and sustainable mining practices. This expansion reflects a commitment to holistic growth beyond construction, capitalising on opportunities across the entire value chain of these enterprises.

DANDOT CEMENT

GLOBAL CEMENT

ANFAL CEMENT

ANFAL ROCK SALT

CAPITAL MINING



SPECIAL ECONOMIC ZONES

Special Economic Zones (SEZ's): Supporting the vision of industrialization, our special economic zones pulse with innovation and opportunity. At Habib Rafiq Engineering (Pvt) Ltd., we've embraced the role of catalysts in shaping economic landscapes.

SPECIAL
ECONOMIC ZONE NEAR
SHEIKHUPURA BASED ON
OVER 77 ACRES

M2 SPECIAL ECONOMIC
ZONE ON C-PEC ROUTE
NEAR DULLA BASED ON
OVER 300 ACRES

PAKISTAN'S LARGEST
SPECIAL ECONOMIC ZONE
BY THE NAME OF CAPITAL
SPECIAL TECHNOLOGY
ZONE (SILICON VILLAGE)



AGRICULTURE AND GREEN ENERGY

Habib Rafiq Engineering (Pvt) Ltd. has strategically broadened its business portfolio with key expansions into sustainable agriculture, green energy, and electric mobility, reinforcing its long-term commitment to innovation, environmental responsibility, and future-ready infrastructure. In the agriculture and energy sectors, the company is focused on integrating modern agricultural methodologies with renewable energy solutions—promoting synergy between food security and clean energy generation under the vision of Empowering Agriculture and Energising the Earth. Furthering its sustainability agenda, Capital Smart Motors, a group subsidiary, is driving advancement in electric mobility by offering next-generation electric vehicles designed to support eco-friendly transportation and reduce carbon emissions.

CAPITAL POWER LIMITED:

LARGEST CORPORATE FARM NEAR WINDER BALOCHISTAN

CAPITAL ORGANICS LIMITED:

LARGEST OLIVE FARM NEAR QILA SAIFULLAH

CAPITAL SMART MOTORS:

JOINT VENTURE WITH GLOBAL AUTOMOTIVE LEADER GEELY



EDUCATION AND HEALTHCARE

Habib Rafiq Engineering (Pvt) Ltd. extended its business into creating an inspiring learning environment through Higher Education Services Limited, including Smart University and Institute of Science & Technology. This expansion entails providing cutting-edge educational facilities, advanced technology integration, and fostering a conducive atmosphere for higher learning. By venturing beyond construction, the company is contributing to the development of well-equipped educational institutions that empower students with knowledge and innovation. Moving forward Habib Rafiq Engineering (Pvt.) Ltd. has entered the domain of Healthcare to provide better medical facilities under the banner of Capital Smart Healthcare.



HIGHER EDUCATIONS SERVICES LIMITED
(SMART UNIVERSITY)

INSTITUTE OF SCIENCE & TECHNOLOGY

CAPITAL SMART HEALTHCARE

BUILDING STATE OF THE ART HOSPITALS
(JV PROJECTS)



SAUDI GERMAN HOSPITAL
(LAHORE SMART CITY)





INFORMATION TECHNOLOGY SERVICES

As part of its commitment to digital transformation and innovation, Habib Rafiq Group has established a strong presence in the Information Technology sector through its dedicated IT companies, Sky47 and Capital Smart Technologies.

These companies specialize in delivering advanced IT solutions, including software development, data processing, cloud infrastructure, and digital consultancy. By leveraging cutting-edge technologies, they support both internal group operations and external clients in achieving operational efficiency, automation, and scalability.

Through Sky47 and Capital Smart Technologies, the group continues to drive technological advancement across sectors, reinforcing its vision of a smarter, connected future.

SKY47

CAPITAL SMART TECHNOLOGIES





MACHINERY & HUMAN RESOURCE

Habib Rafiq Engineering (Pvt) Ltd. Holds pride in its ownership of the largest fleet of earth-moving equipment and construction machinery in Pakistan.



ABOUT THE HUMAN RESOURCE

EQUIPPED WITH A TOTAL STRENGTH 5500

35% MANAGERIAL, TECHNICAL SKILLED STAGE

40% SEMI-SKILLED, UNSKILLED, LABOUR, DAILY WAGER

15% ADMINISTRATION, HR & SECURITY

10% HEALTH AND SAFETY, QUALITY ASSURANCE

OUR CLIENTS



ALSTOM



DAEWOO



Klockner & co



KAPCO



CONTACT US

HEAD OFFICE (LAHORE-PAKISTAN)

 **Habib Rafiq Engineering Pvt Ltd**
13-H, Gulberg-II, Lahore-Pakistan
 +92-42-35711411, 35711716
 +92-42-35751593, 35762274
 hrl@habibrafiq.com
 www.habibrafiq.com

CORPORATE OFFICE (LAHORE-PAKISTAN)

 **Habib Rafiq Engineering Pvt Ltd**
10th Floor, Tricon Corporate Center,
73 Jail Road, Main Gulberg, Lahore-Pakistan
 +92-42-35761575, 76
 hrl@habibrafiq.com
 **URL:** www.habibrafiq.com

REGIONAL CORPORATE OFFICE (ISLAMABAD-PAKISTAN):

 **Habib Rafiq Engineering Pvt Ltd**
Plot # 15, Street # 73, Silver Square Plaza
Mehar Ali Road, F-11 Markaz,
Islamabad-Pakistan
 +92-51-2224301-03
 +92-51-2224304
 hrl@habibrafiq.com
 www.habibrafiq.com

HEAD OFFICE SAUDI ARABIA

 **Habib Rafiq Engineering Pvt Ltd**
Building 7549, Al Shaikh Muhammad Al Turki St,
Ar Rawdah District, Exit 11, Postal Code 13213,
Riyadh, Kingdom of Saudi Arabia
 +966 50 363 0056
 hrl.ksa@habibrafiq.com
 www.habibrafiq.com